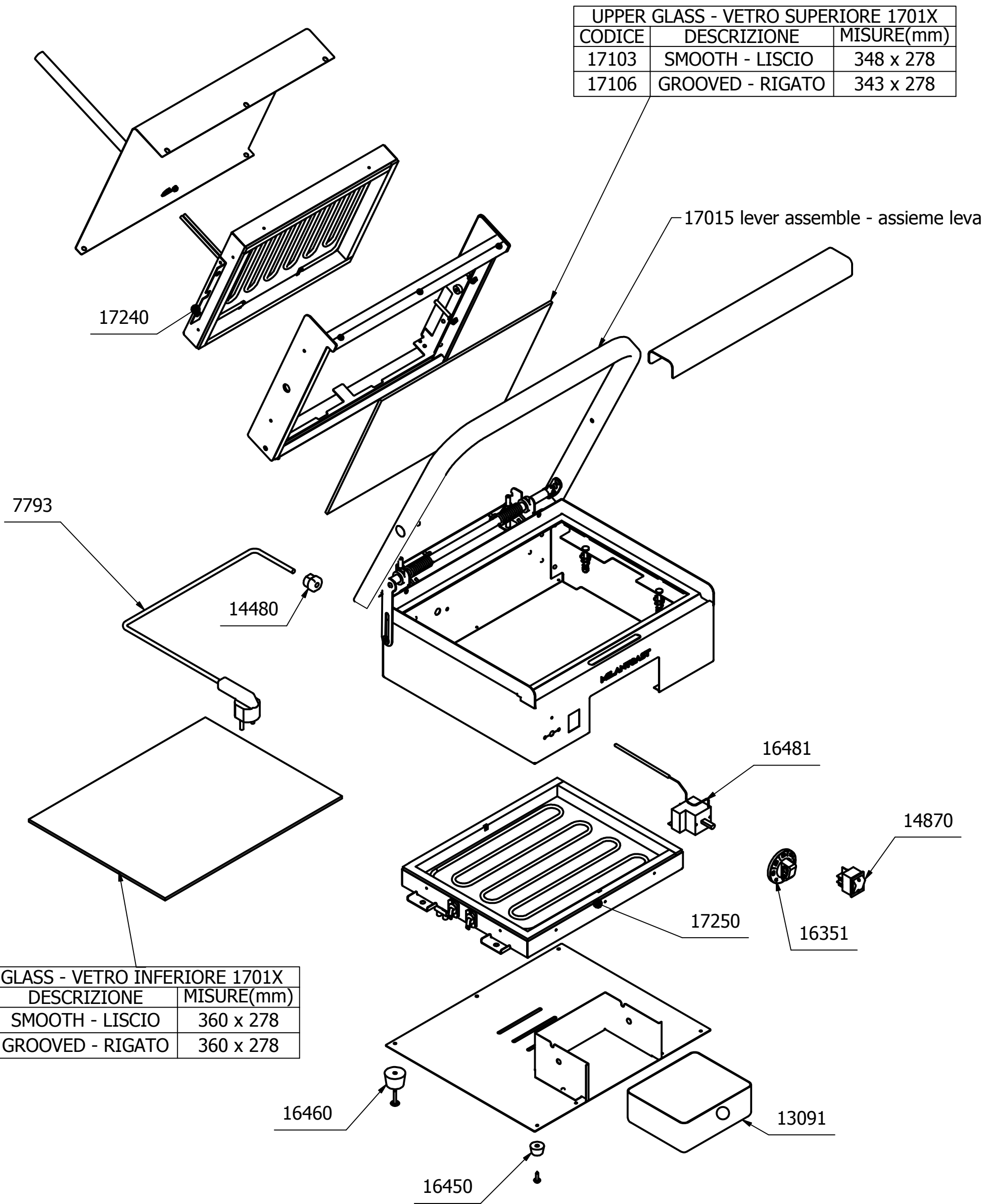
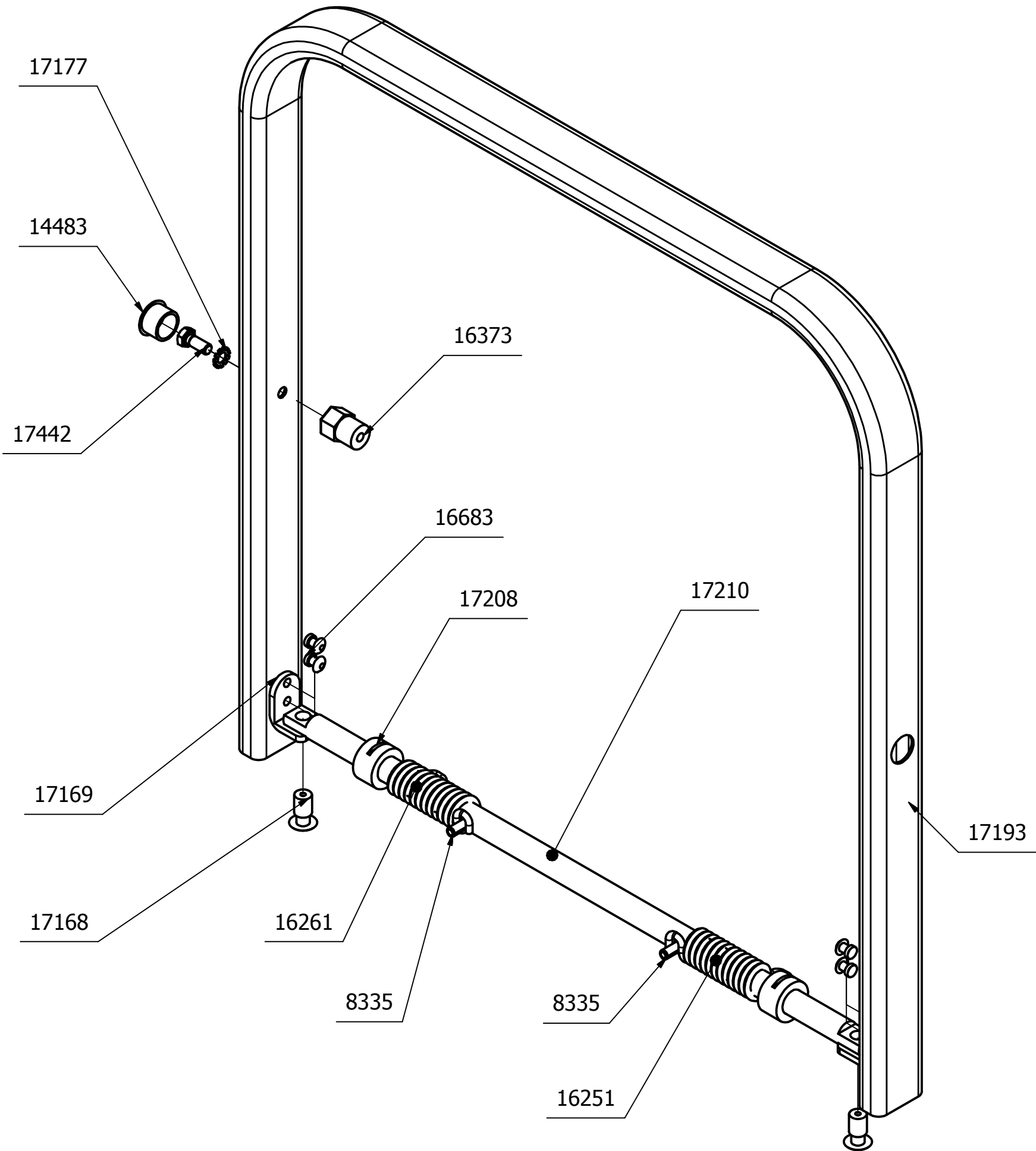


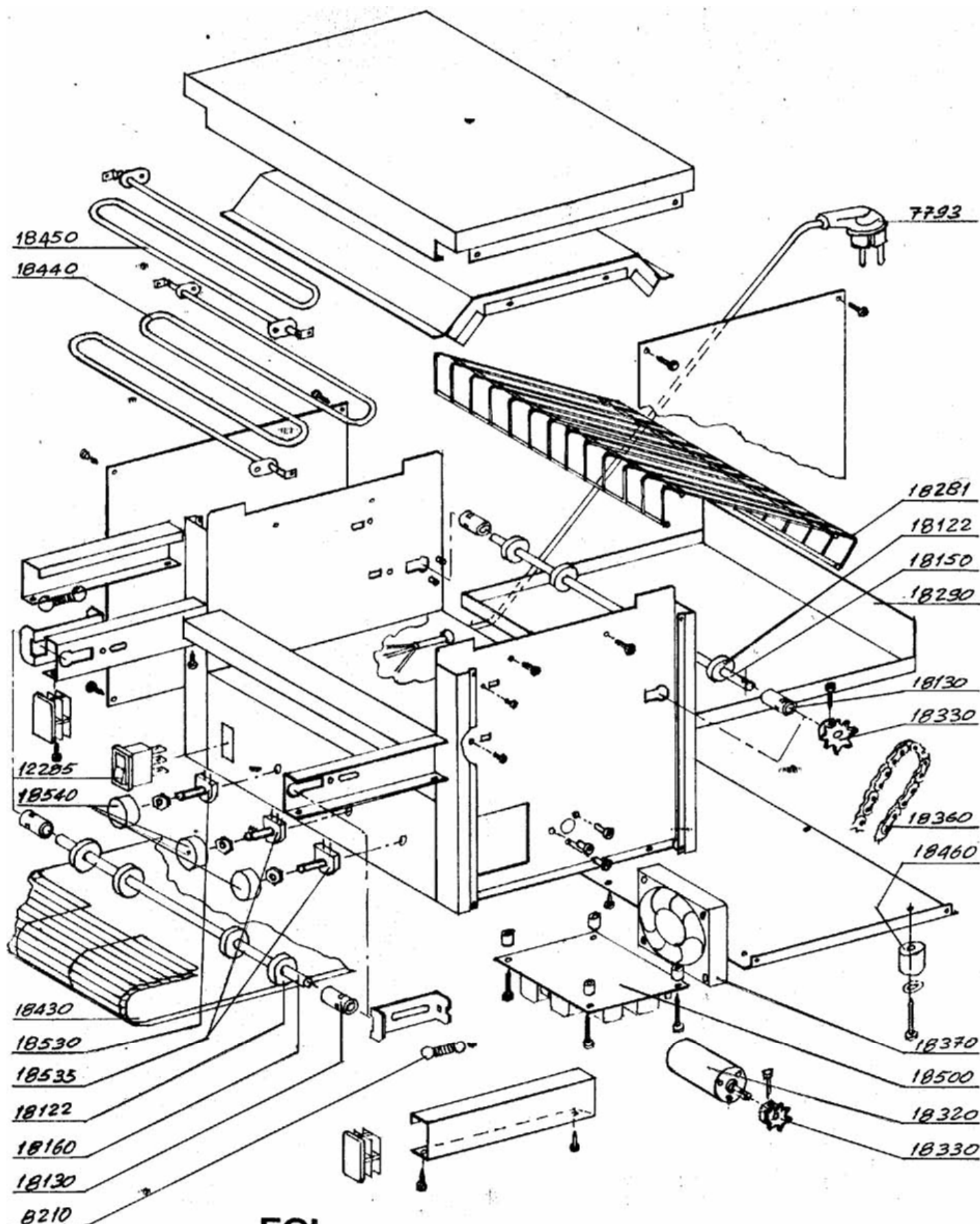
1600X BISTECCHIERA SINGOLA 18kW
1605X BISTECCHIERA DOPPIA 36kW

EGI snc di Brambilla S. e C.
20059 VIMERCATE (MI) - Via Po, 7
Tel. 039/6082914 - Fax 039/6082915
Cod. Fisc. e P. IVA 02129100968
D/S. 13007 01/04/03



17105 lever assemble - assieme leva



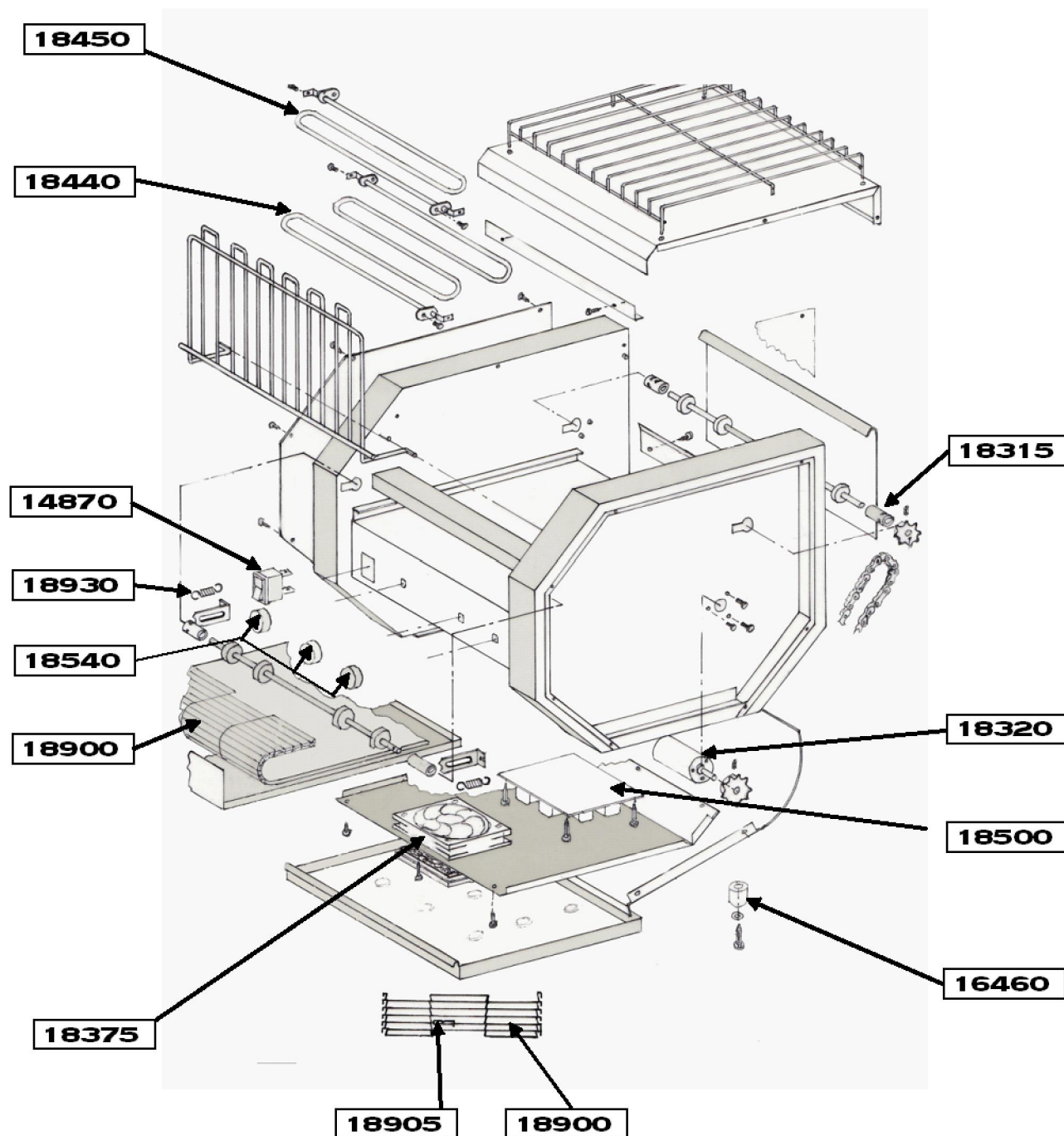


EGI snc di Brambilla S. e C.
 20059 VIMERCATE (MI) - Via Po, 7
 Tel. 039/6082914 - Fax 039/6082915
 Cod. Fisc. e P. IVA 02129100968

TOSTAPANE ROTATIVO

D/S. 18410 11-07-2000

- TOSTAPANE ROTATIVO I8050 230V 1,7Kw PARTI DI RICAMBIO
- CONVEYOR TOASTER I8050 230V 1,7Kw SPARE PARTS



DENOMINAZIONE :

ESPLOSO PARTI RICAMBIO I8050

EXPLONDING VIEW I8050

	Firma	Data
Completato da	A.Sala	18.06.07
Approvato da	R. Brambilla	18.06.07

DIS. 18415

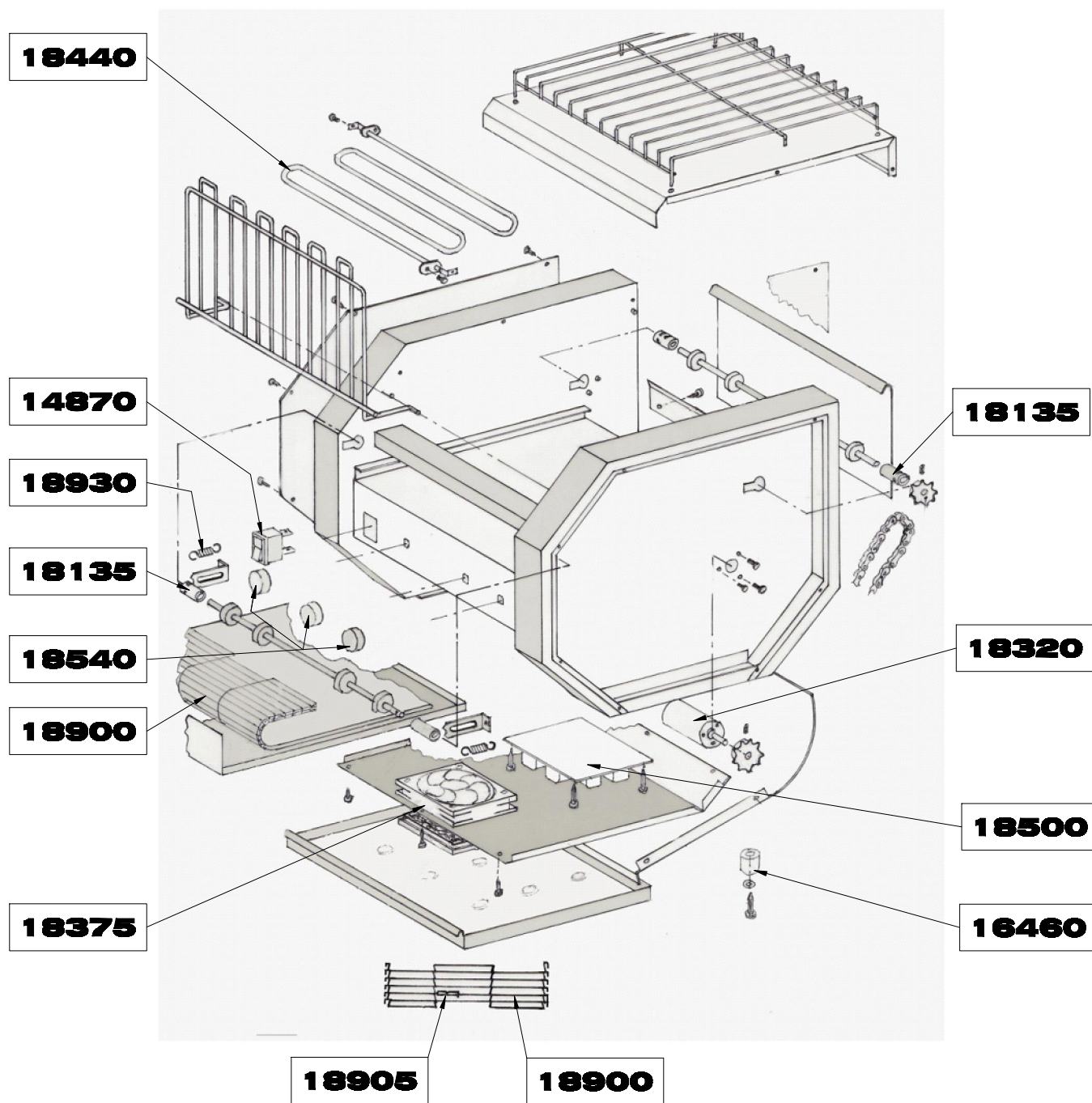


EGI Milan Toast
Tel. +39 039.68.83.332
Fax +39 039.60.22.896
E-mail: info@milantost.com

**REV
01**

milan toast

- TOSTAPANE ROTATIVO I805I 230V 2,1KW PARTI DI RICAMBIO
- CONVEYOR TOASTER I805I 230V 2,1KW SPARE PARTS



DENOMINAZIONE :
ESPLOSO PARTI RICAMBIO I805I
EXPLONDING VIEW I805I

	Firma	Data
Completato da	A.Sala	12.05.09
Approvato da	R. Brambilla	12.05.09

DIS. 18416

milan toast

via delle Industrie, 26 SULBIATE
TEL +39 039 68 83 332 FAX +39 039 60 22 886
E-mail Info@milanttoast.com

**REV
02**

